

IN MY GARDEN - BUMBLEBEES

Bumblebees are one of our most important insect pollinators. Without pollinators humans would not have most of the foods that we eat.

The Queen wakes from her winter hibernation in the Spring and starts to feed and search for a place to nest, usually in the ground. She lays eggs and they hatch and grow into the workers (female), drones (male) and next years Queen bees.



ONLINE NATURE:

- wicklowmountainsnationalpark.ie
- biodiversity.ie
- birdwatchireland.ie
- met.ie
- mothsireland.com
- mountaineering.ie
- npws.ie
- orienteing.ie
- wildflowersofireland.net

Word Search

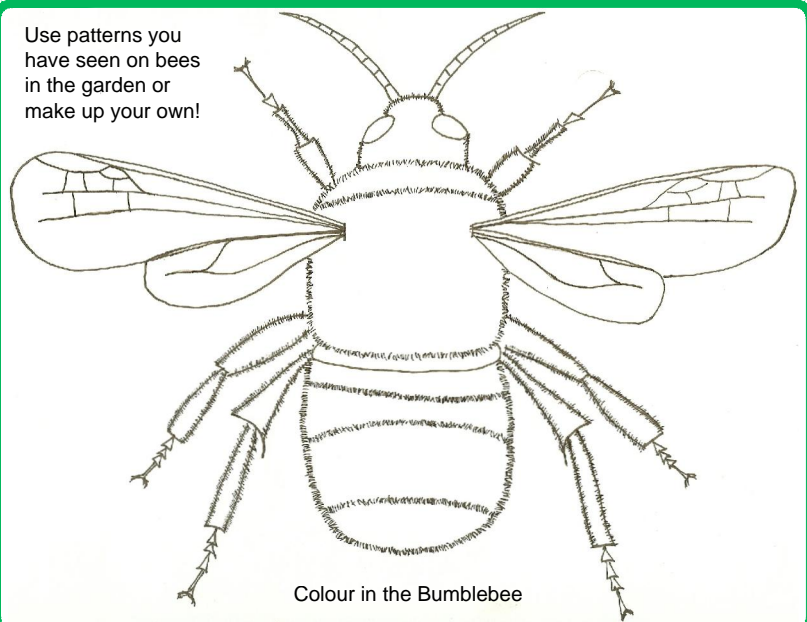
B Q S P R I N G A
 U U A L P V O N R
 B E M R O A H E F
 N R X B L P H S L
 E S T F L O W T O
 C N Q U E E N L W
 T B U S N A B F E
 A V E E Q U B E R
 R L P O N H V I E

Bumblebee
Flower
Nectar
Nest
Pollen
Queen
Spring

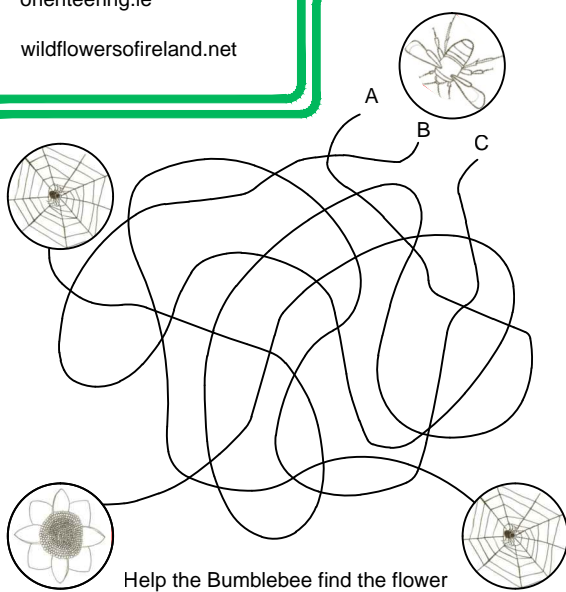
TO DO:

- Plant your own patch of wildflower seeds, watch them grow and help feed our bumblebees when they flower.
- Flap your arms really fast like a Bee buzzing its wings. How long could you fly for? Time Flying_____
- Wear any black and yellow clothes you have and spend time being a bee. Think, act and do the things you think bees would enjoy, sugary foods anyone?

Use patterns you have seen on bees in the garden or make up your own!



Colour in the Bumblebee



Help the Bumblebee find the flower

